

Figure 4 : Grattoir sur entame

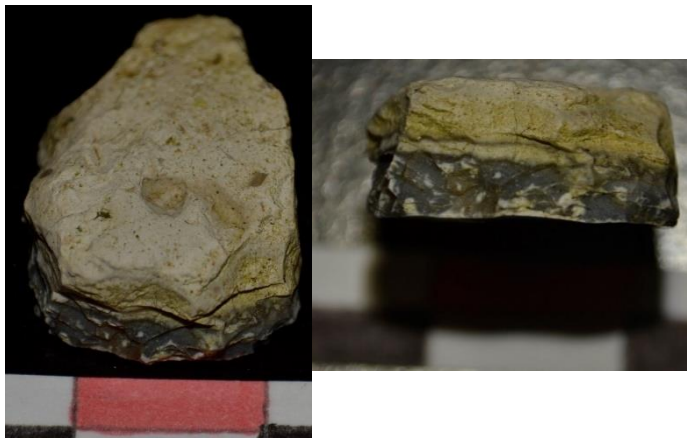


Figure 2 : Grattoir sur entame

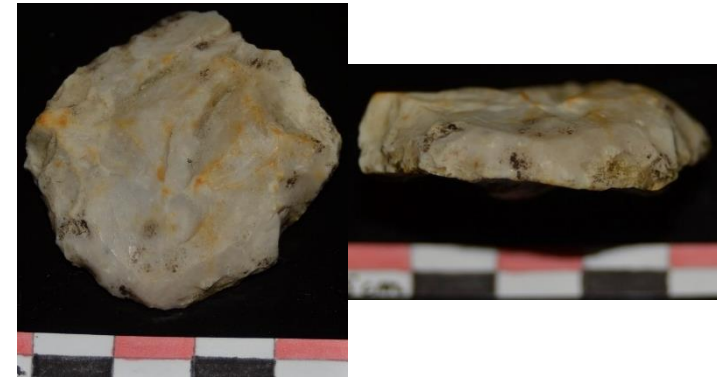


Figure 1 : Grattoir

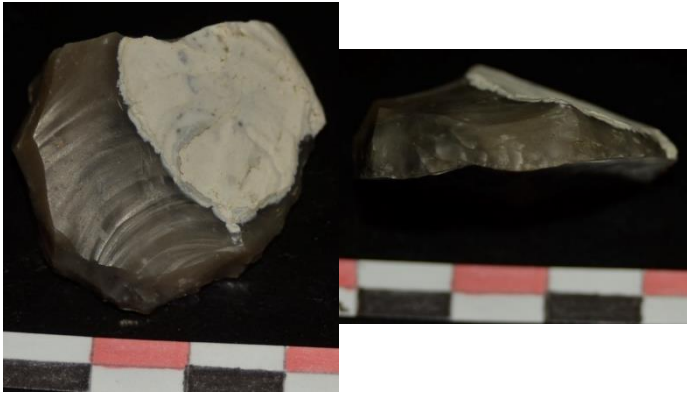


Figure 5 : Grattoir sur entame

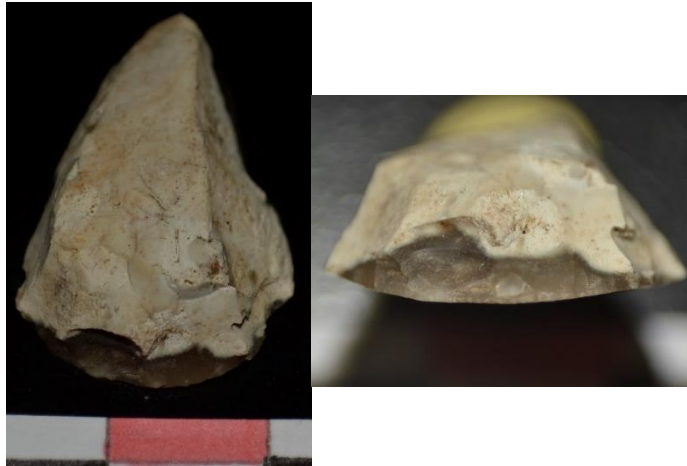


Figure 6 : Grattoir sur entame



Figure 3 : Armature à tranchant transversal

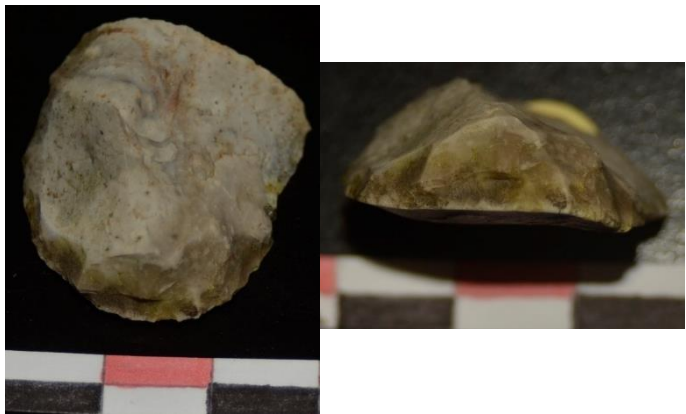


Figure 7 : Grattoir

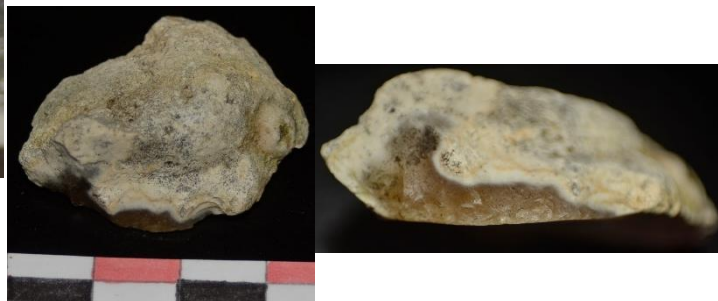


Figure 8 : Grattoir sur entame

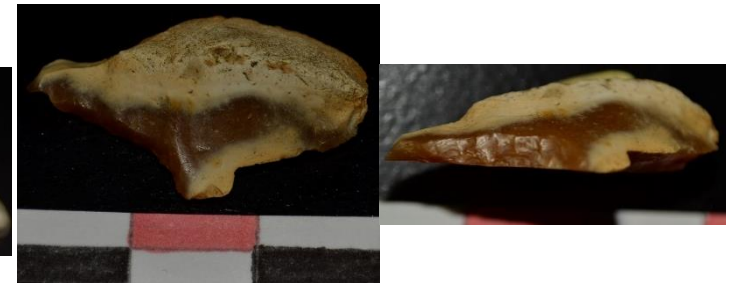
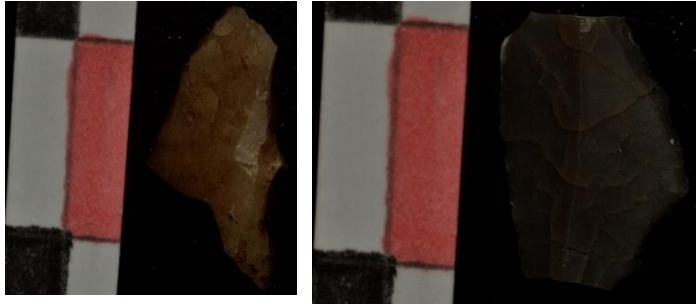


Figure 9 : Eclat avec retouches en coche



*Figure 11 : Armes, éléments à bord abattu*

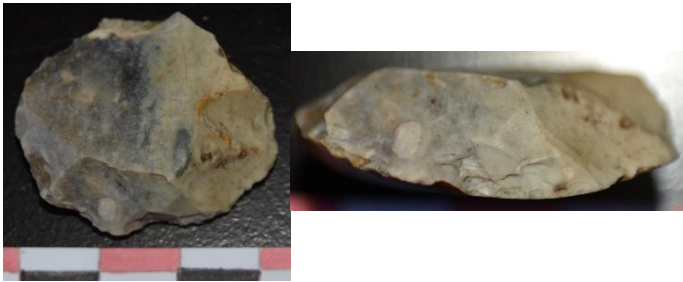


Figure 15 : Grattoir



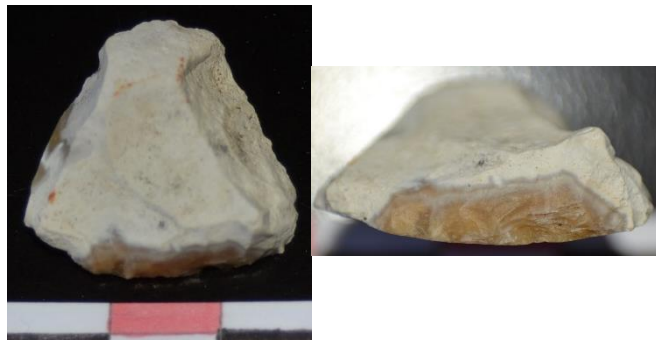
Figure 18 : Grattoir



Figure 12 : Grattoir



*Figure 14 : Grattoir*



*Figure 16 : Grattoir sur entame*



Figure 10 : Grattoir

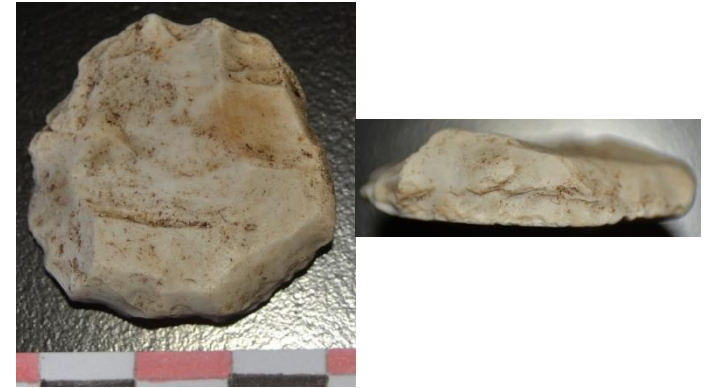


Figure 13 : Grattoir



Figure 17 : Grattoir

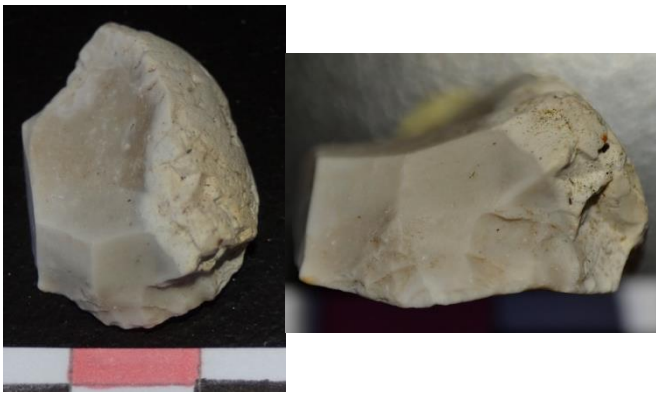


Figure 21 : Grattoir



Figure 20 : Grattoir

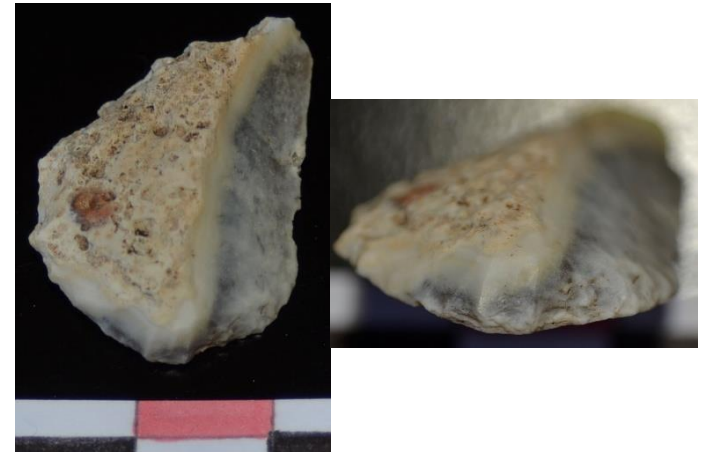


Figure 19 : Grattoir sur entame

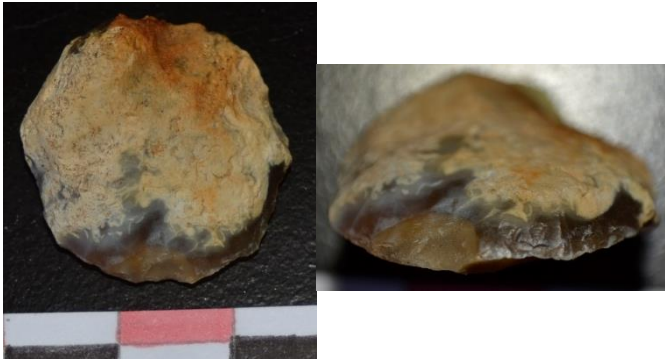


Figure 22 : Grattoir sur entame

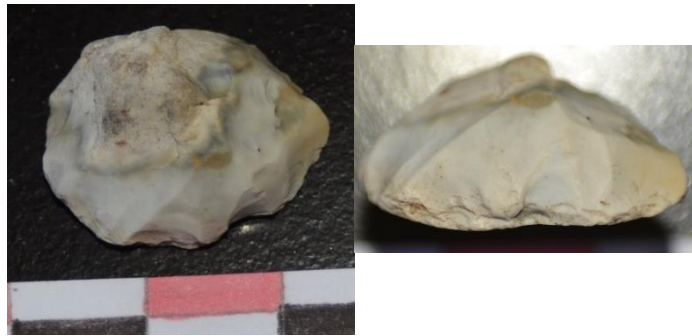


Figure 23 : Grattoir



Figure 24 : Grattoir sur entame

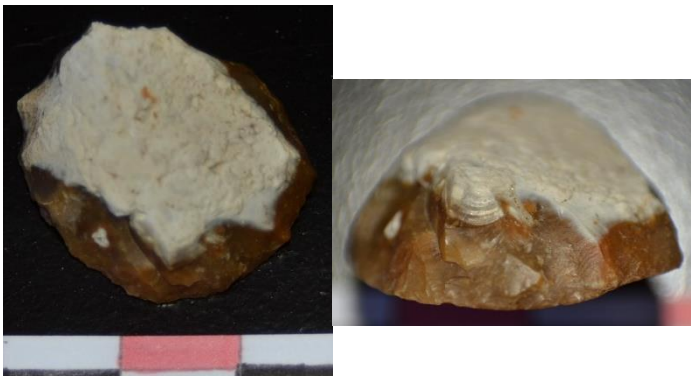


Figure 26 : Grattoir sur entame



Figure 25 : Grattoir sur entame



Figure 27 : Grattoir sur entame



Figure 29 : Grattoir



Figure 28 : Grattoir



Figure 30 : Grattoir

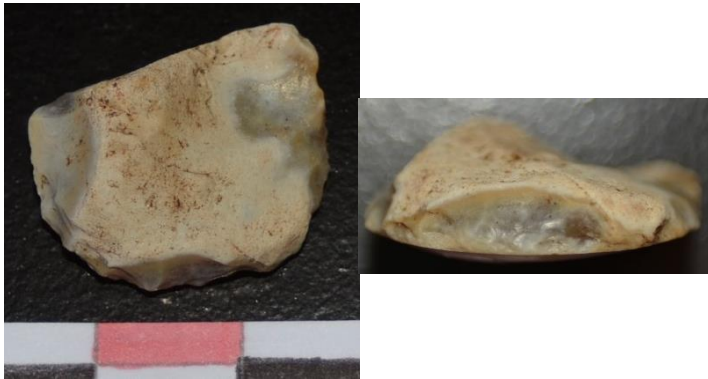


Figure 31 : Grattoir sur entame

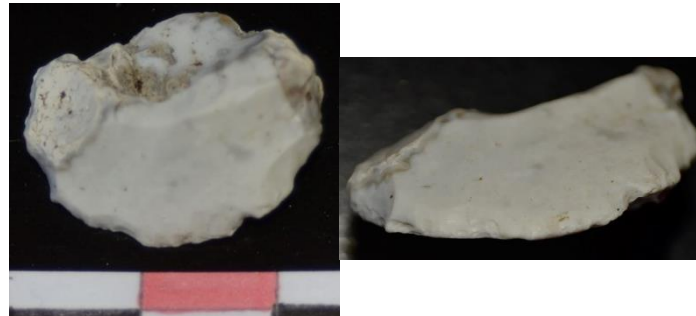


Figure 33 : Grattoir



Figure 32 : Grattoir sur entame

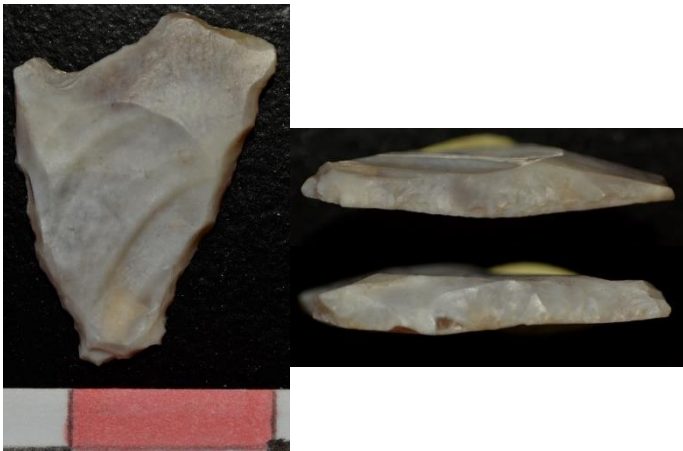


Figure 35 : Armature à tranchant transversal

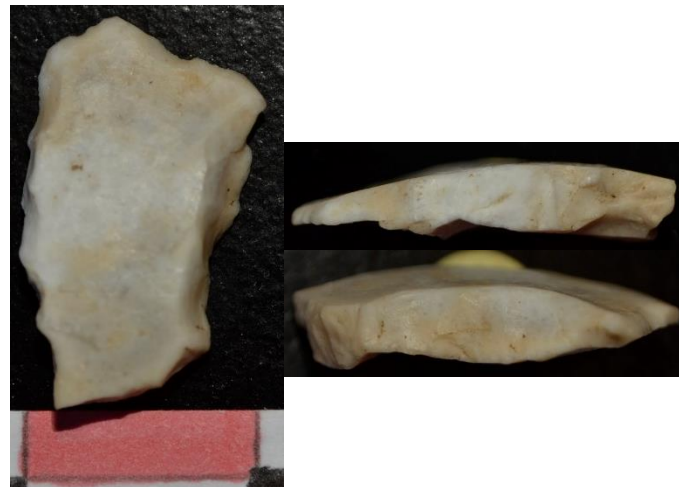


Figure 34 : Armature à tranchant transversal



*Figure 36 : Outil prismatique, à nez*



Figure 39 : Armature perçante à ailerons et pédoncule

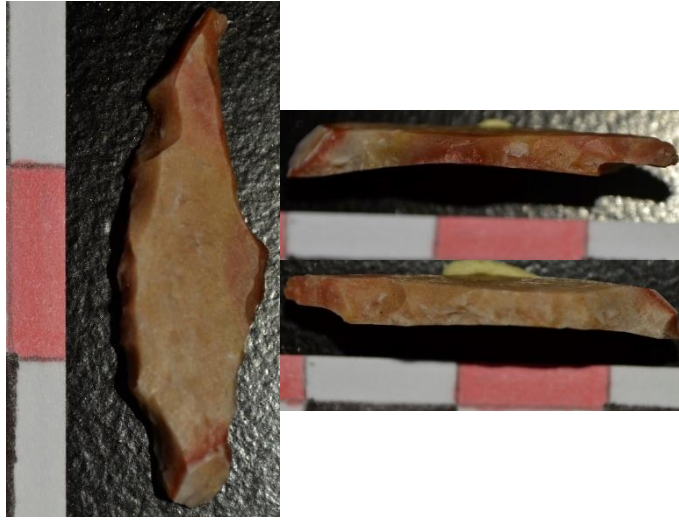


Figure 38 : Élément à bord abattu, armature perçante possible

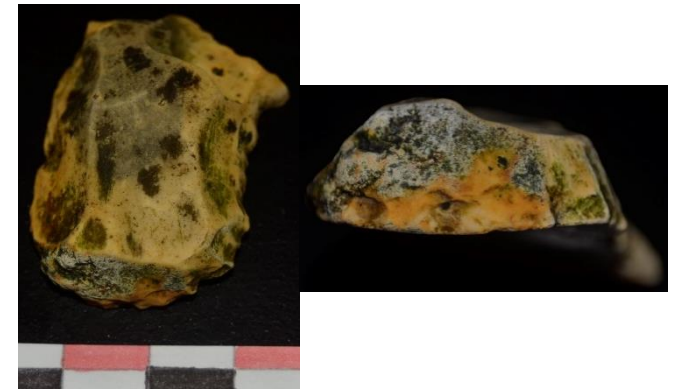


Figure 37 : Grattoir

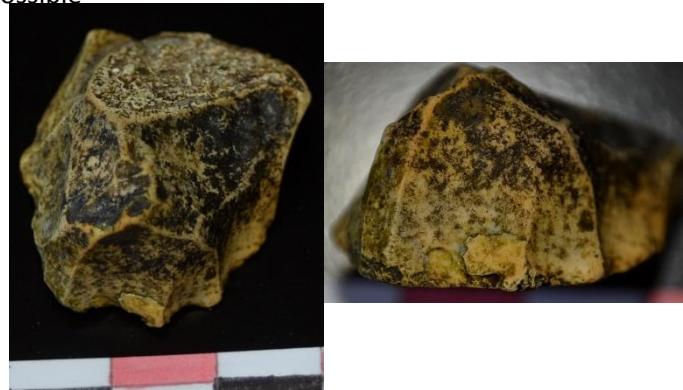


Figure 41: Grattoir

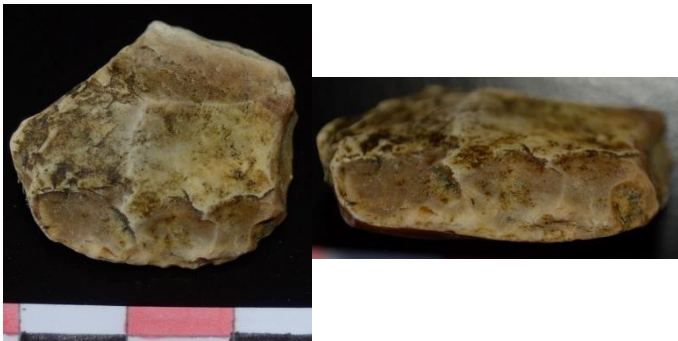


Figure 42 : Grattoir

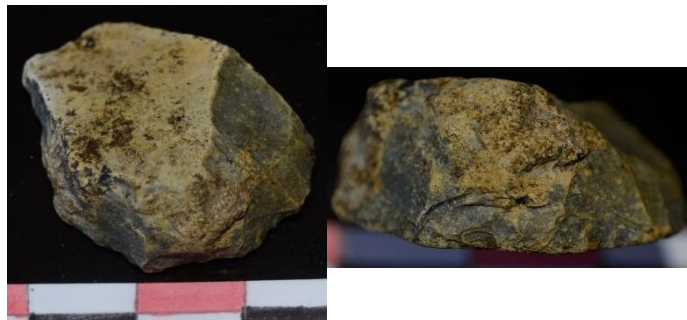


Figure 44 : Grattoir



Figure 45 : Grattoir



Figure 40 : pointe type pseudo levallois retouchée

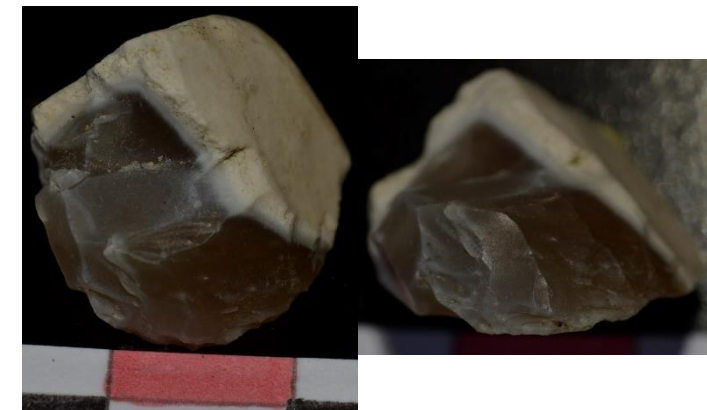


Figure 43 : Grattoir